

Owner :
Gulf Marine Services

Class :
ABS + A1 (E) & AMS

Builders :
Maroil Engineers & Shipbuilders PTE

Year of build
1981



GMS SAEED

Safety equipment

Fast Rescue Boat 1
Life rafts 2 x 25 person
CO2 system E/Room, Galley

Fire system

Fighting System 1 (FIFI Class 1)
Kosaka type 360 m³/hr
at 120m head
Fire Monitors 2 x 3000 ltr/min
65/70 m throw of water

Main Particulars

LOA 38.0 m
Length BP 36.5 m
Breadth 9.5 m
Depth 3.7 m
Draft max 3.45 m
Deadweight 420 t
Displacement max 550 t

Tank capacities

Fresh water 184.0 t
Fuel oil 210.0 t
Foam 5,23 t
Lube Oil 3,06 t
Ballast water 29,5 t
Detergent 5,23 t

Helideck N/A
Deck Area 110 m²/2.5 t/m²
Deck cargo 30 t
with full F/O, F/W

Accommodations

Total 24 pers INC Crew

Propulsion and generators

Main engines 2 x Detroit diesel 12 v - 149 t
BH & RPM 2 x 720 HP
Propulsion Twin screw
Generators 2 x Detroit diesel 6 v - 71 N
280v / 3 phase / 50 hz
Bow Thruster Ulstein 200 HP
Steering gear Yamamoto

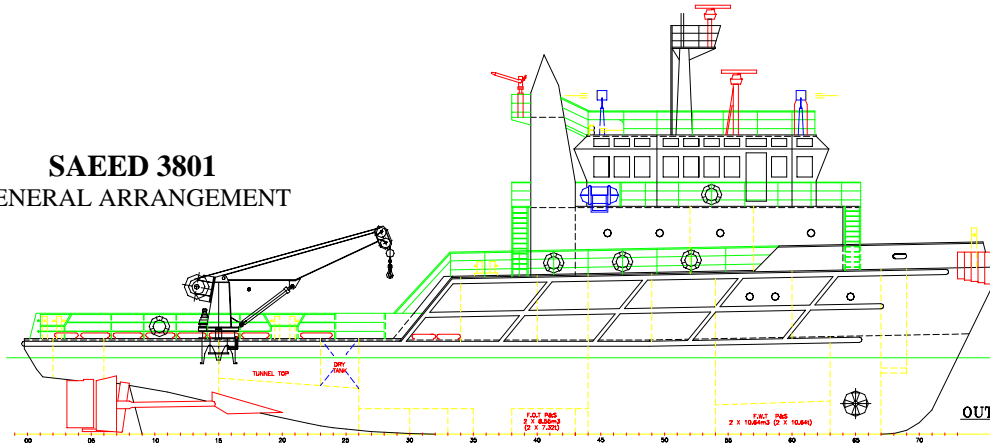
Deck Machineries

Anchor windlass Koyo KSW-10m/min415/3/50
Tugger Winch Koyo 5 t @ 12m/min
Crane Hiab Foco 1265 speed loader mod

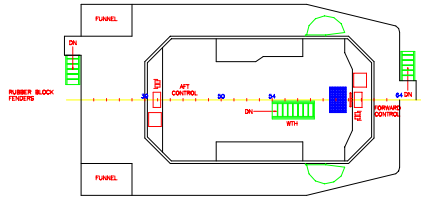
Communication equipment

VHF 2
SSB 2
Watch Receiver 1
Echo Sounder 1
Radars 2
Autopilot 1
Gyro Compass 1
Mangnatic Comp: 1

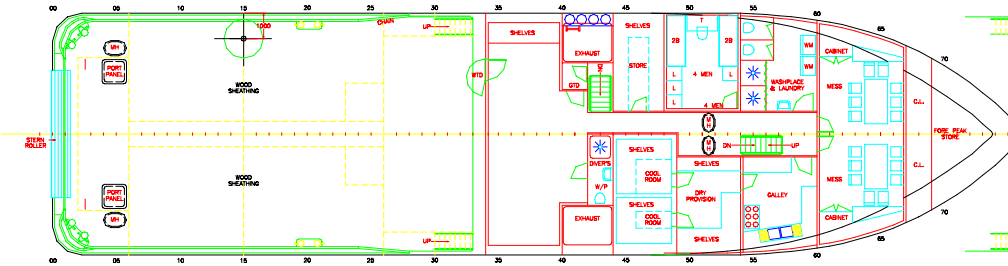
SAEED 3801 GENERAL ARRANGEMENT



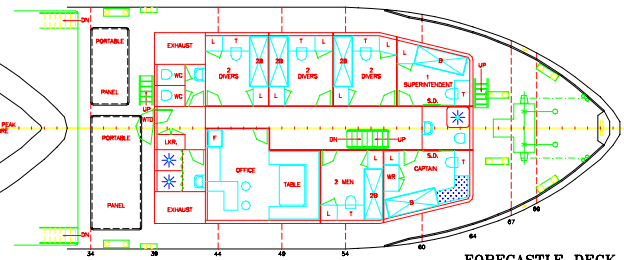
OUTBOARD PROFILE



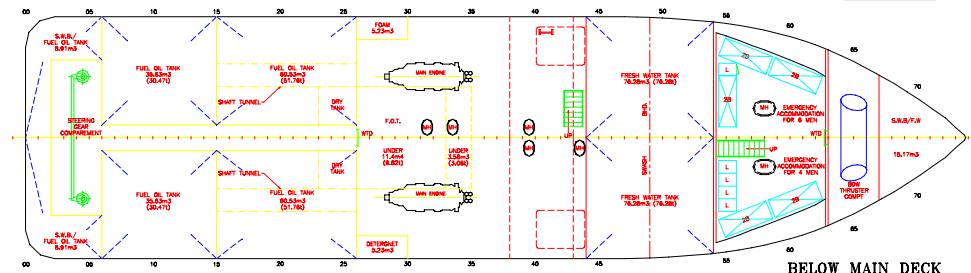
WHEELHOUSE DECK



MAIN DECK



FORECASTLE DECK



BELOW MAIN DECK

GENERAL OVERALLS
 LENGTH O.A. 38.00 M (124.65)
 LENGTH B.L. 38.00 M (124.65)
 BEAM M.O. 8.00 M (26.25)
 DRAUGHT (DECKED) 3.00 M (9.84)
 COMBUSTION 10.00 M (32.81)
 FUEL OIL TANK 27.00 M (88.58)
 FRESH WATER TANK 12.00 M (39.37)
 GENERATORS 2 X 10.44 M (34.41)

DATE	MODIFICATION	BY
38 M. MULTI - PURPOSE UTILITY VESSEL		
GENERAL ARRGT.		
OWNER	DESIGNER & SHIPBUILDING	DATE NO. VER.
38.00	100	
GULF MARINE SERVICES		
P.O. BOX 46046 ABU DHABI U.A.E.	TEL: 558430	FAX: 553421
DESIGNER	CHECKED/APPROVED	SCALE
1/100		
DATE	SCALE	DRAWING NO.
28 SEP 93	1/78	