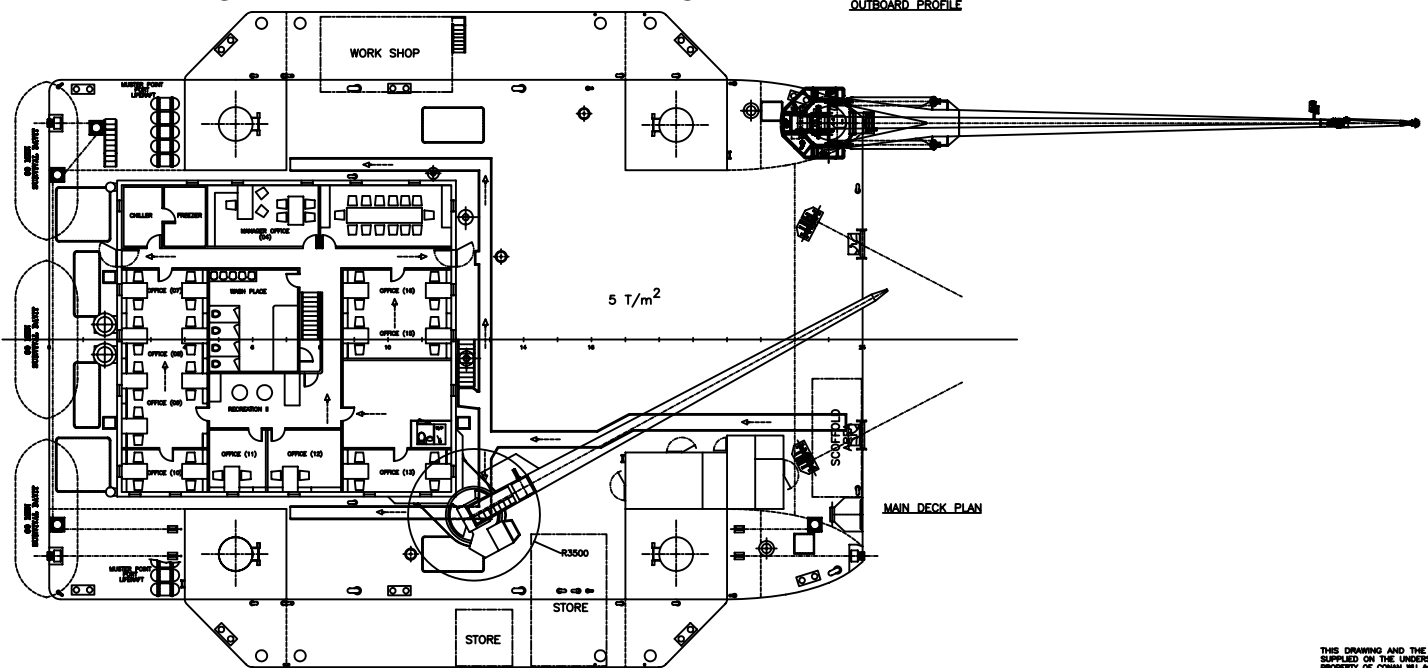


OUTBOARD PROFILE

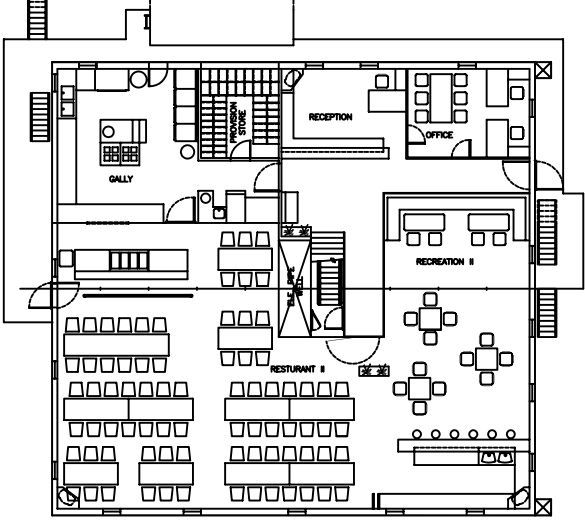


MAIN DECK PLAN

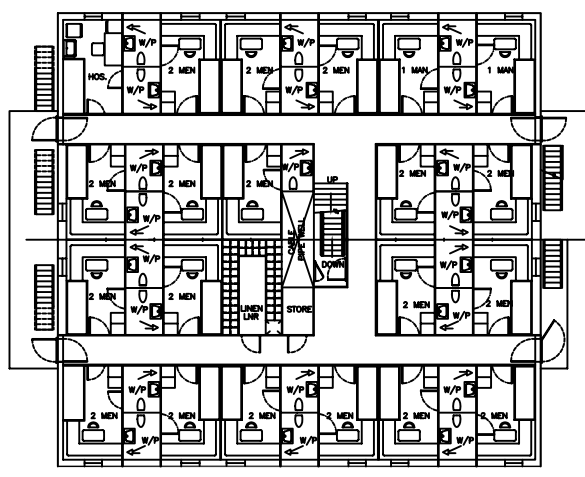
NAASHI 4302

14/04/03	PORT SIDE CRANE MOVED	1	CHW
DATE	MODIFICATION	REV	BY
SHIP:	43.2M X 27.6M X 4.1M ACCOMMODATION JACK-UP		
TITLE:	GENERAL ARRANGEMENT SHT 1/2		
OWNER:	OFFSHORE LOGISTIC INVESTMENT SA	YARD NO.:	085
BUILDER:	SHIP ROOM SING	CLASS:	ABS
CONAN WU & ASSOCIATES			
NAVAL ARCHITECTS			
INFORMANTS BLDG., LEVEL 5, 8 INTERNATIONAL BUSINESS PARK, #2008 EXT. STROKE 080814, TEL: (85) 882-1138, FAX: (85) 882-1238, (85) 882-0123, E-MAIL: conanwu@bigmac.com.sg			
DRAWN:	CHECKED:	APPROVED:	SCALE: DRAWING NO. REV
4.6.97		NTS	C 1121/G-1 1

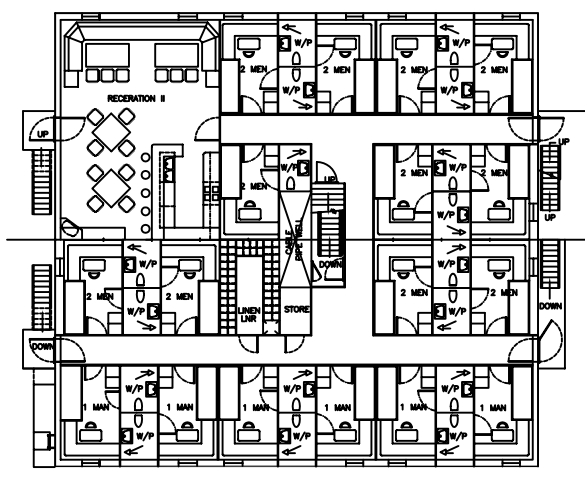
THIS DRAWING AND THE INFORMATION CONTAINED HEREIN ARE SUPPLIED ON THE UNDERSTANDING THAT THEY ARE THE EXCLUSIVE PROPERTY OF CONAN WU & ASSOCIATES. THEY MUST NOT BE USED OR REPRODUCED IN WHOLE OR IN PART WITHOUT PERMISSION IN WRITING.



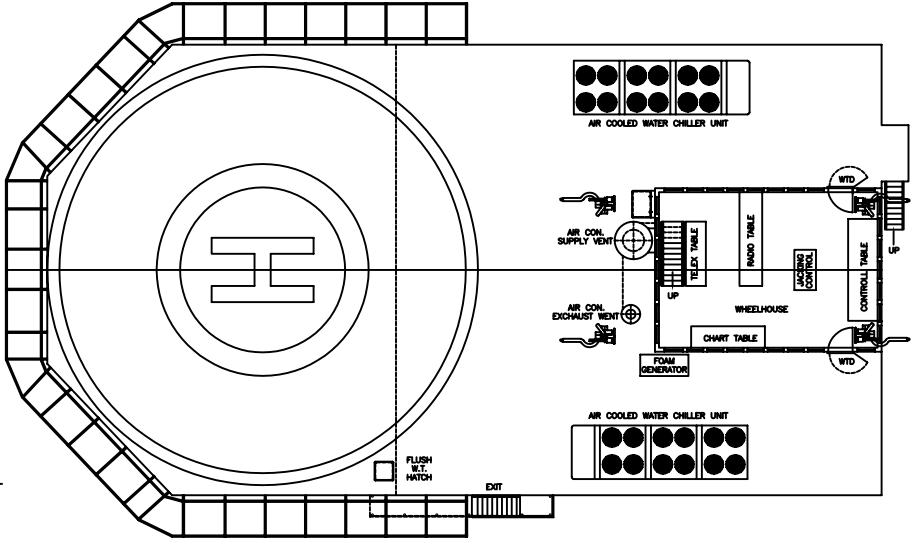
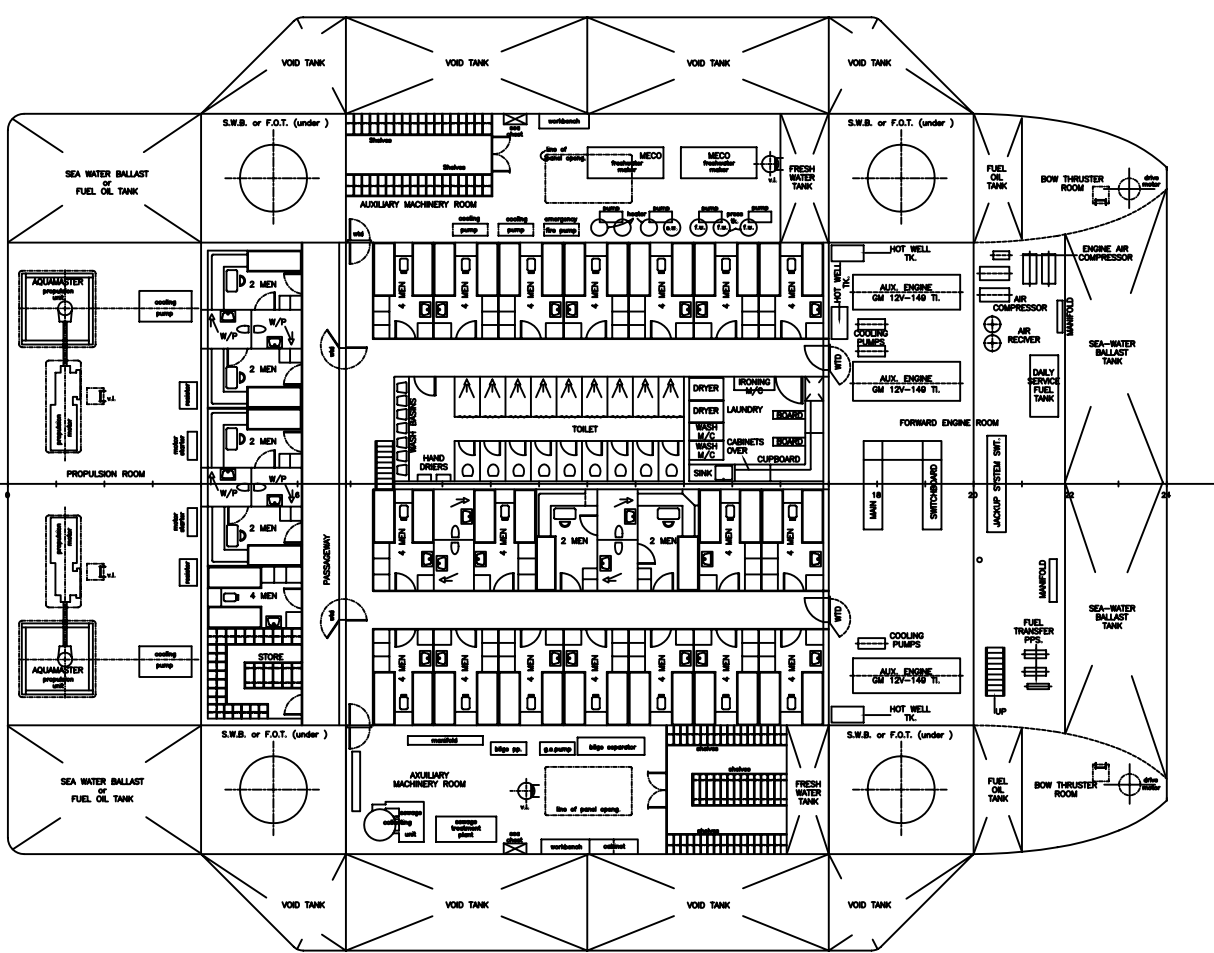
01 LEVEL



02 LEVEL



03 LEVEL



NAASHI 4302

DATE	MODIFICATION	REV	BY
SHIP:	43.2M X 27.6M X 4.1M ACCOMMODATION JACK-UP		
TITLE:	GENERAL ARRANGEMENT SHT 2/2		
OWNER:	OFFSHORE LOGISTIC INVESTMENT SA	YARD NO.:	085
BUILDER:	SHIP ROOM SING	CLASS:	ABS
CONAN WU & ASSOCIATES			
NAVAL ARCHITECTS			
INFORMANTS BLDG., LEVEL 5, 8 INTERNATIONAL BUSINESS PARK, #2008 EXT. STROKE 080814, TEL: (85) 882-1138, FAX: (85) 882-1238, (85) 882-0123, E-MAIL: conanwu@bigmac.com.sg			
DRAWN:	CHECKED:	APPROVED:	SCALE: DRAWING NO. REV
4.6.97		NTS	C 1121/G-2 0

THIS DRAWING AND THE INFORMATION CONTAINED HEREIN ARE SUPPLIED ON THE UNDERSTANDING THAT THEY ARE THE EXCLUSIVE PROPERTY OF CONAN WU & ASSOCIATES. THEY MUST NOT BE USED OR REPRODUCED IN WHOLE OR IN PART WITHOUT PERMISSION IN WRITING.