

# KIKUYU 4303

## SELF PROPELLED SELF ELEVATING ACCOMMODATION JACK -UP BARGE



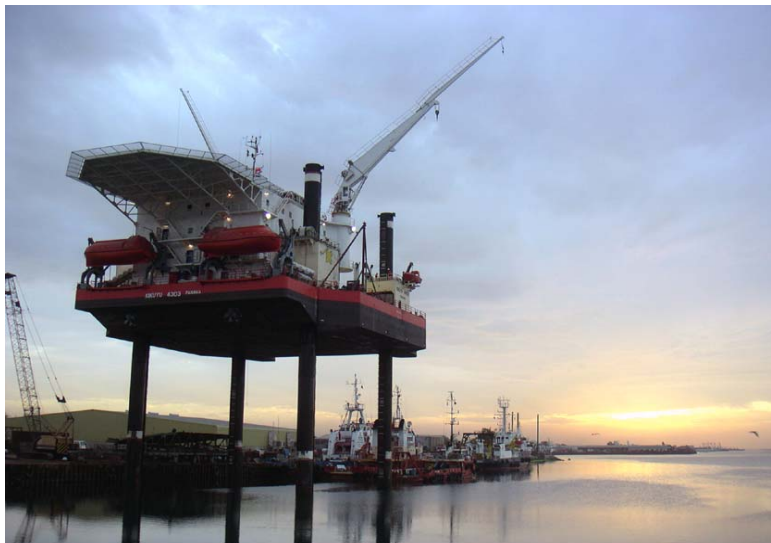
**Project No:**  
C 2888

**Owner :**  
Gulf Marine Services

**Class :**  
ABS A+1, Restricted Service, + PAS

**Builders :**  
Stig Jiangsu + Gulf Marine Services

**Hull No:**  
G 2003/6



**KIKUYU 4303**

### Safety equipment

Life boats 2 x 90 men  
Life rafts 12 x 25 pers cap  
CO2 system Engine and galley

### Fire and gas detection system

Fire detection system CS 4000 FIRE ALARM  
Gas detection system OLDHAM  
H2S sensors 8  
CH4 sensors 8

### Main Particulars

LOA 43.20 M  
Length BP 43.01 M  
Breadth 34.8 M  
Depth 4.10 M  
Design draft 2.65 M  
GRT 2910  
NRT 837

### Accommodations

Total 151  
Hospital 1  
Office area 300 M2

### Helideck

Aircraft 1  
Bell 212  
Bell 412

### Deck Machineries

Anchor 6.5 Tons storm anchor  
Winches Shanghai Hailing Marine Equipment Co. Ltd  
Wire capacity 4 x 400 metres  
Crane Liehber 45 T @ 30 metres / 5 T @ 30 metres  
Hydralift 20 T @ 25 metres / 1.5 T @ 25 metres

### Communication equipment

VHF 3 x Sailor VHF/DSC  
SSB 2 x Furuno 250 watts  
Aircraft radio 2 x Icom

### Tank capacities

Fresh water 216.12 M3  
Fuel oil 68.72 M3  
Sea Water 580.95 M3  
Lube Oil 7.7 M3  
Dirty oil 9.63 M3  
Sewage 15.4 M3

### Propulsion and generators

Gen sets Cat 3508  
3 x 800 Kw  
Emer Gen : 1 x 99 Kw  
Bow thruster 2 x Rolls Royce  
2 x 260 Kws  
F.O Pump 2 x 30 m3/hr  
Air Compr: 2 x 17 m3/hr  
Water maker Mecco

**Length of legs** 48.5 Metre: Water depth 28 Metres

**Length of legs** 67.9 Metre: Water depth 36 Metres