

Main Particulars

LOA	76 m
Lenght BP	61 m
Beam	36 m
Depth	6 m
Design Draft	3.65 m
Variable Load	1200 t
Displacement	6850 t
Leg Length	94.5 m

Tank Capacities

Freshwater	480 m ³
Fuel Oil	300 m ³
Ballast Water	700 m ³
Lube Oil	5 m ³
Dirty Oil	20 m ³
Brine Tanks	160 m ³

Helideck

Aircraft	1 Super Puma	Total	151 pers
		Hospital	1

Accommodation

Propulsion and Generators

Generator Sets	4 x 1500 kW / 50 hz Wartsila 8L20 / 680 v
Emer. Generators	480 kW / 400 v 50 hz
Thrusters	4 x 1200 kW HRP
Speed	8 Kts
F.O. Pump	8
Water Maker	2 x 20 m ³

Communication Equipment

VHF	2
SSB / Inmarsat	2 + 1
Aircraft Radio	1
GMDSS	1
VSAT	1
Water depth	65 m

Deck Machinery

Anchor	1 x 4 t anchor
Winches	Shanghai Hailing Marine Equipment Co. ltd
Wire Capacity	650 m, 48 mm dia
Crane	167.5 t @ 6.2 m / 20.5 t @ 42.7 m 15 t @ 25 m / 1.5 t @ 35 m

Fire and Gas Detection System

Fire detection system	Yes
Gas detection system	Yes
H ₂ S sensors	Yes
CH ₄ sensors	Yes

Safety Equipment

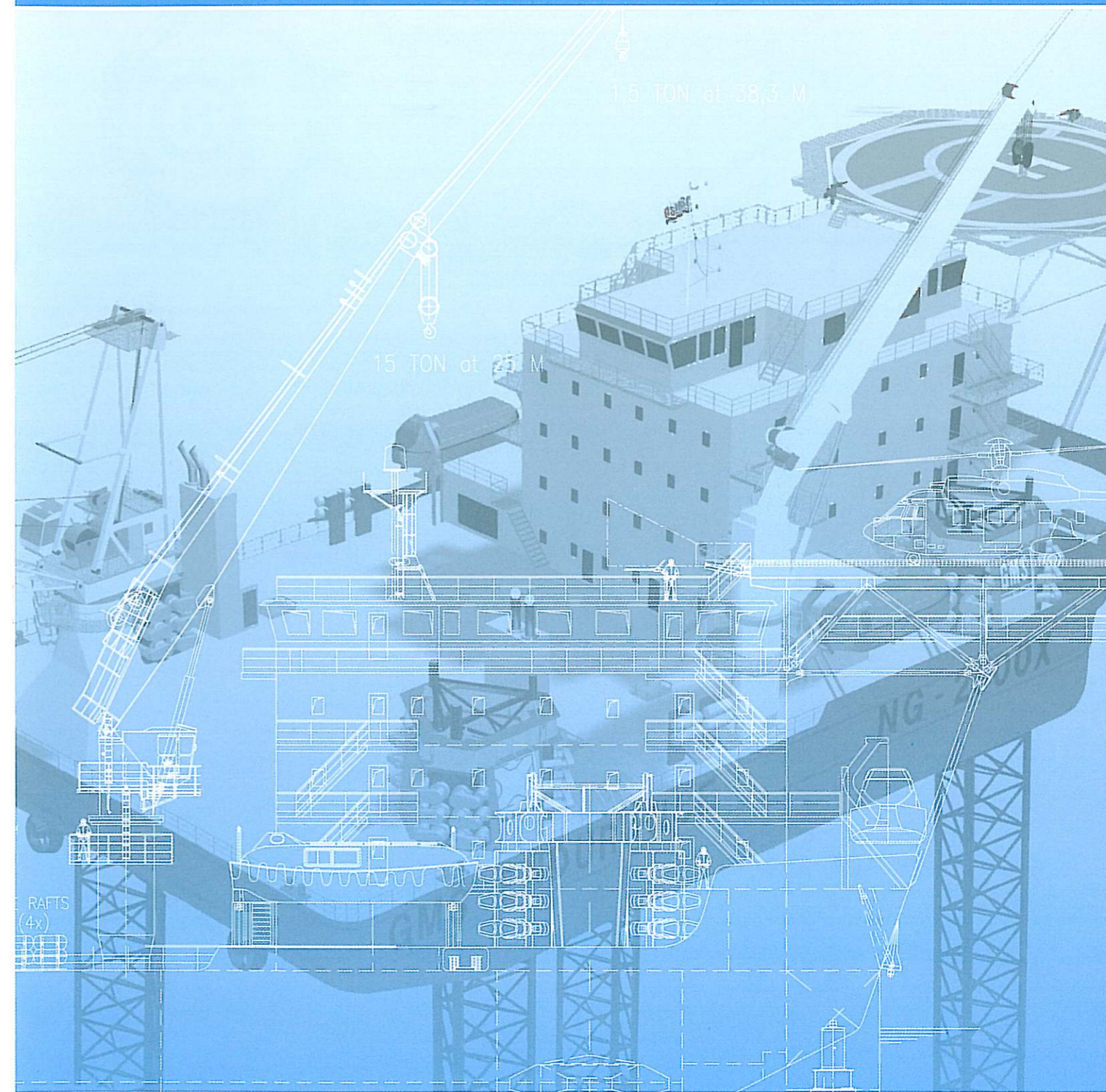
Lifeboats	2 x 90 persons
Liferafts	180 persons
CO ₂ System	E/Room/Galley

Deck Area

Area	1000 m ²
Deck Loading	5.5 t / m ²

ENDURANCE

SELF PROPELLED SELF ELEVATING ACCOMMODATION JACK-UP BARGE



Owner

Gulf Marine Services

Builders

Gulf Marine Services, Abu Dhabi

Class

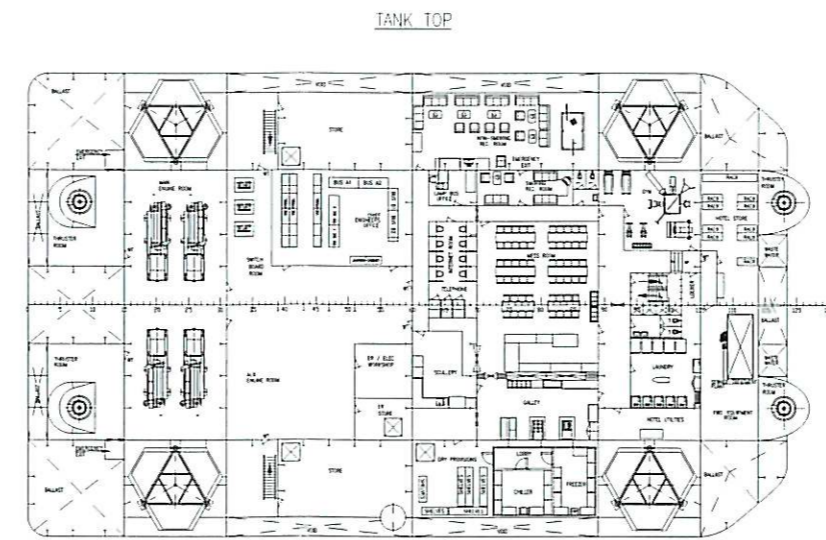
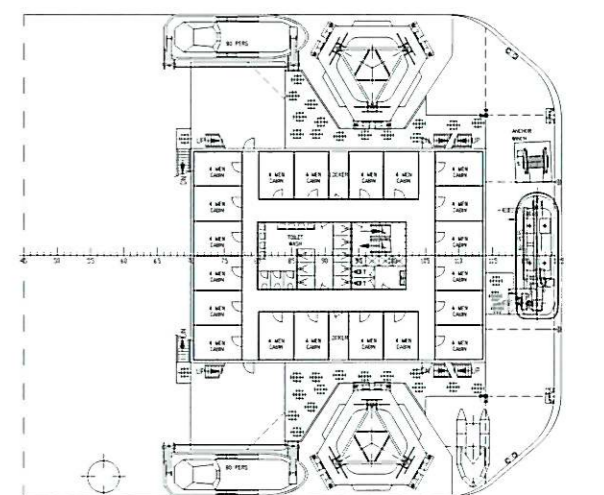
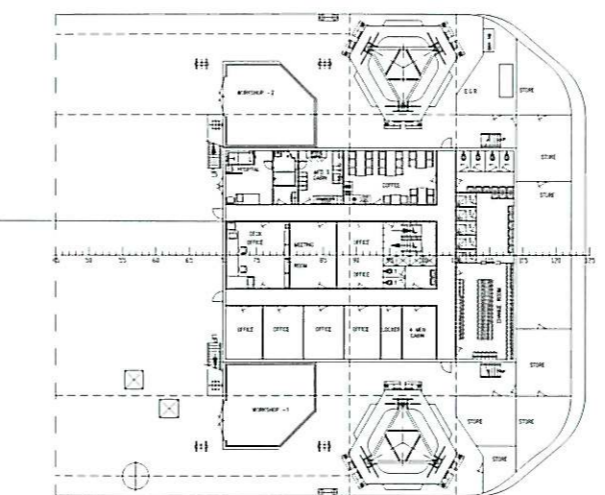
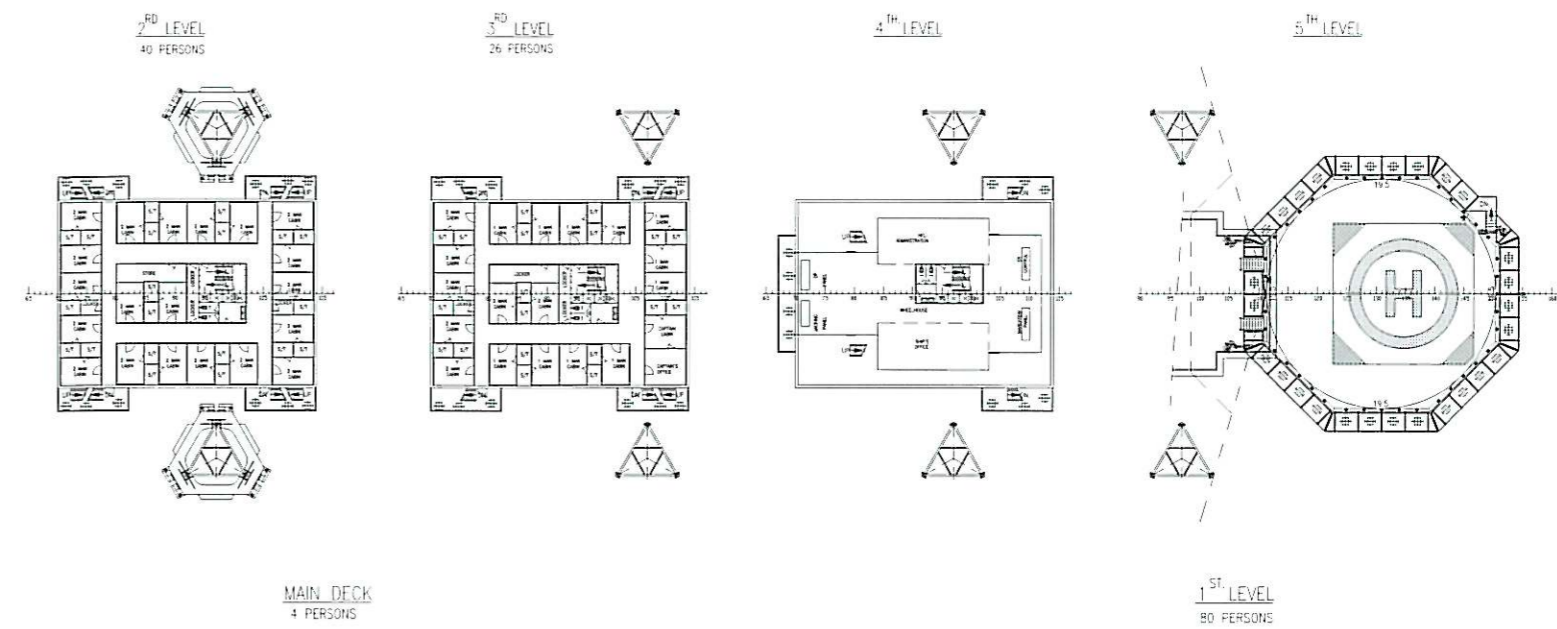
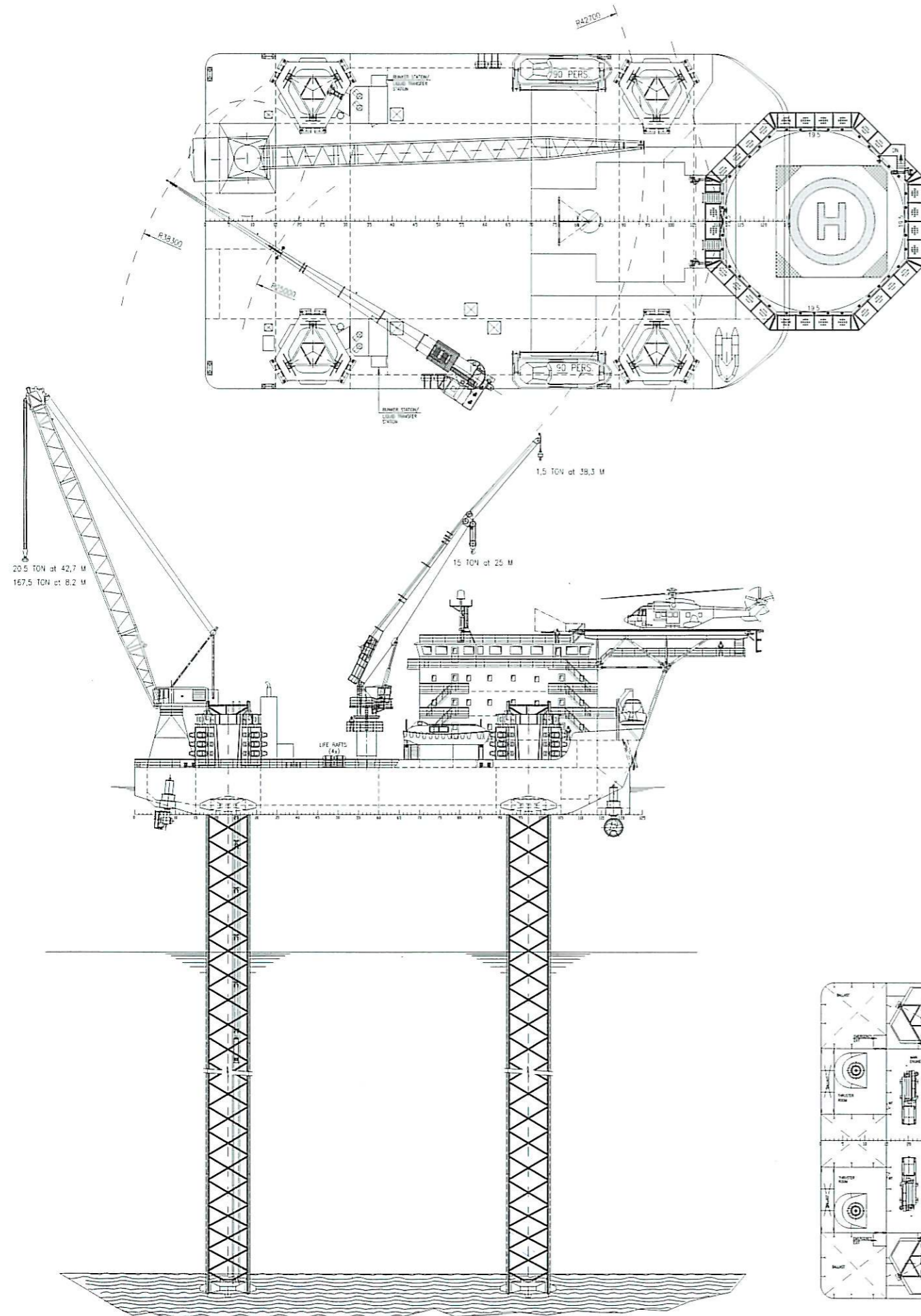
ABS A1, + PAS

Year of Build

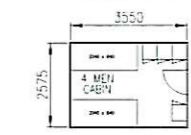
2008

ENDURANCE

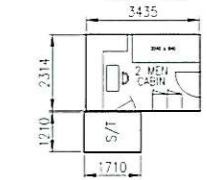
SELF PROPELLED SELF ELEVATING ACCOMMODATION JACK-UP BARGE



DETAIL 1
TYPICAL 4 MEN CABIN ARRANGEMENT
SCALE 1:100



DETAIL 2
TYPICAL 2 MEN CABIN ARRANGEMENT
SCALE 1:50



DETAIL 3
TYPICAL 1 MEN CABIN ARRANGEMENT
SCALE 1:50

